



OUTDOOR

FURNITURE | AWNINGS | UMBRELLAS | PERGOLAS | ROOF SYSTEMS



CONTENTS

TIMBER FURNITURE		TABLE TOPS & BASES	
10	Blewbury	90	Table Tops
18	Roble	92	Table Bases
22	Cotswold		
26	Chiltern		
30	Malvern		
34	Scaffold		
36	Gabion		
		POLYPROPYLENE FURNITURE	
		90	Lugo
WEAVE FURNITURE		ACCESSORIES	
38	Bali	102	Parasols & Bases
40	Havana	112	Heaters
44	Maldives	114	Banners
46	Bordeaux	116	Planters
		120	Cushion Boxes
ROPE FURNITURE		COVER SOLUTIONS	
50	Padstow	122	Umbrellas
58	Casablanca	124	Awnings
62	Bude	126	Roof Systems
		130	Pergolas
		134	Gazebo Side Sheets
METAL FURNITURE			
70	Zanzibar		
74	Venice		
78	Toulouse		
86	Madrid		
90	Table Tops		
92	Table Bases		



INTRODUCTION

For over 25 years, Showpiece Design has helped hospitality venues create outdoor spaces that are more appealing, more usable and more profitable year-round. We support clients from initial space planning and layout design through to manufacture, delivery, installation, waste removal and ongoing aftercare—making the entire process simple and stress-free.

With our highly trained staff, high stock levels and attention to detail, we are able to meet tight deadlines and offer outstanding service.

Our products are sourced from the best British manufacturers and also imported from Europe and afar enabling us to offer high quality with great value, delivered quickly and efficiently to your sites. We also manufacture bespoke furniture to meet your exacting requirements.

We are constantly reviewing and expanding our portfolio to offer new and exciting products and ideas to help keep you one step ahead. If you are looking for something unique that we don't currently offer, we will work with you to design and source it - let us do the hard work.

WHY CHOOSE US?

Fast turnaround – Stock held for rapid delivery and installation, often within 7 days.

White-glove service – Assembly, installation, waste removal and recycling included as standard.

Expert space planning – Site visits, layout advice and floorplans to maximise covers and flow.

One-stop solution – Furniture, cover solutions, heaters and partitioning supplied and installed.

Bespoke & brand-led – Custom colours, branding and tailored solutions to suit your venue.

Sourced for you – If it's not in our range, we'll find or make it—saving you time and effort.

25+ years of experience – Trusted expertise helping venues get more from their alfresco spaces.





SECTORS

We have worked with some of the biggest names in U.K hospitality and have built long standing relationships due to our efficient and conscientious service. We work with the following sectors:

- Interior Designers & Architects
- Pubs
- Hotels
- Golf Clubs / Sports Clubs
- Restaurants
- Holiday Parks
- Cafes
- Spas
- Care Homes
- Schools & Universities
- Offices
- Parks & Public Spaces
- Landscapers

BLEWBURY

The Blewbury range features beautifully crafted hardwood outdoor furniture made from 100% FSC-certified Acacia. Naturally dense and highly durable, it offers Teak-like performance with a rich brown, marbled grain that elevates any alfresco setting. Built for hospitality use, Blewbury delivers an expected lifespan of over 15 years. The timber can be left to weather to a soft silvery grey, or treated annually to retain its colour and protect against food and drink stains.







Dining Chair

Code	BB1423
Height	86cm
Width	45cm
Depth	59cm



Armchair

Code	BB1401
Height	86cm
Width	53cm
Depth	59cm



Seat Pad

Code	BB1401-C
------	----------



Bar Height Chair

Code	BB1415
Height	105cm
Width	40cm
Depth	51cm



Bar Table 0.8m²

Code	BB1414
Height	105cm
Width	80cm
Depth	80cm



Bar

Code	BB1416
Height	105cm
Width	120cm
Depth	60cm



Dining Table 0.8m²

Code	BB1402
Height	74cm
Width	80cm
Depth	80cm



Dining Table 1.0m²

Code	BB1425
Height	74cm
Width	100cm
Depth	100cm



Dining Table 1.3m

Code	BB1404
Height	74cm
Width	130cm



Lounge Chair w/Cushions

Code	BB1412
Height	76cm
Width	70cm
Depth	71cm



2 Seater Sofa w/Cushions

Code	BB1411
Height	76cm
Width	140cm
Depth	71cm



Coffee Table 1.0m x 0.5m

Code	BB1413
Height	35cm
Width	107cm
Depth	50cm



Dining Table 1.2m x 0.8m

Code	BB1426
Height	74cm
Width	120cm
Depth	80cm



Dining Table 1.6m x 0.8m

Code	BB1403
Height	74cm
Width	160cm
Depth	80cm



Timber Protector



4ft Bench

Code	BB1405
Height	86cm
Width	120cm
Depth	59cm



4ft Backless Bench

Code	BB1420
Height	45cm
Width	120cm
Depth	38cm



Sun Lounger Textilene Sling

Code	BB1408
Height	30cm
Width	60cm
Depth	202cm



*The chair above shows how a Blewbury chair will likely look after being exposed to the elements for 3-6 months. The left side has had a treatment applied, the right side is untreated and has started to silver.



ROBLE

The Roble range is crafted from 100% FSC-certified Roble timber, chosen for its exceptional density and durability in all weather conditions. Naturally long-lasting, it's ideal for high-use hospitality settings. The pale yellow tone with a smooth lustre brings a fresh, refined look to outdoor spaces. Roble can be left to weather to a soft silvery grey, or treated annually to retain its colour and protect against food and drink stains.





Stacking Armchair

Code	AR150HB
Height	84cm
Width	60cm
Depth	60cm



Dining Table 0.8m²

Code	AR156
Height	75cm
Width	80cm
Depth	80cm



Dining Table 1.5m x 1m

Code	AR157
Height	75cm
Width	103cm
Depth	150cm



Lounge Chair w/Cushions

Code	AR121
Height	90cm
Width	76cm
Depth	85cm



2 Seater Sofa w/Cushions

Code	AR122
Height	90cm
Width	140cm
Depth	85cm



Corner Module w/Cushions

Code	AR161
Height	90cm
Width	85cm
Depth	85cm



Dining Table 1.25m

Code	AR159X
Height	73cm
Width	125cm



Adirondack Chair & Stool

Code	ADR101
Height	100cm
Width	73cm
Depth	156cm

Teak



Middle Module w/Cushions

Code	AR162
Height	90cm
Width	68cm
Depth	85cm



Left Hand Module w/Cushions

Code	AR165
Height	90cm
Width	68cm
Depth	85cm



Right Hand Module w/Cushions

Code	AR164
Height	90cm
Width	68cm
Depth	85cm



4ft Bench

Code	AR104
Height	87cm
Width	122cm
Depth	60cm



Royal Park Bench 5ft

Code	HW137
Height	92cm
Width	153cm
Depth	63cm



Royal Park Bench 6ft

Code	HW134
Height	92cm
Width	183cm
Depth	63cm



Coffee Table 0.8m²

Code	AR125
Height	43cm
Width	80cm
Depth	80cm



Coffee Table 1.2m x 0.7m

Code	AR155
Height	43cm
Width	68cm
Depth	120cm

COTSWOLD

The Cotswold range is a timeless, space-efficient choice for cafés and bistros. Fully folding across the collection, it allows for quick set-up, easy storage and flexible layouts. Heavyweight steel frames are powder coated for durability and paired with Robinia hardwood slats for a classic look built to last. The range includes three folding table sizes, a side chair and a bench.

New for 2026, Cotswold is available in two on-trend frame colours: neutral beige and vibrant reseda green.





Folding Table 1.2m x 0.8m Black

Code	TM004
Height	74cm
Width	120cm
Depth	80cm



Folding 4ft Bench Black

Code	TM005
Height	80cm
Width	120cm
Depth	74cm



Folding Chair Reseda Green

Code	TM003/CG
Height	87cm
Width	43cm
Depth	60cm



Folding Table 0.7m² Reseda Green

Code	TM002/TG
Height	74cm
Width	70cm
Depth	70cm

NEW FOR
2026



Folding Chair Black

Code	TM003/C
Height	87cm
Width	43cm
Depth	60cm



Folding Table 0.7m² Black

Code	TM002/T
Height	74cm
Width	70cm
Depth	70cm



Folding Table 0.85m Black

Code	TM003/T
Height	74cm
Width	85cm



Folding Chair Beige

Code	TM003/CB
Height	87cm
Width	43cm
Depth	60cm



Folding Table 0.7m² Beige

Code	TM002/TB
Height	74cm
Width	70cm
Depth	70cm

NEW FOR
2026

CHILTERN

The Chiltern range offers a modern twist on classic hardwood outdoor furniture. Durable black powder-coated frames are paired with pre-treated Robinia hardwood slats, ready for immediate outdoor use. Designed for flexible layouts, the range includes multiple dining and bar table sizes with coordinating seating to suit a variety of spaces. Ergonomic dining chairs stack neatly for easy storage, making Chiltern a practical, stylish solution for high-use hospitality environments.





Stacking Armchair

Code	CHILT001
Height	84cm
Width	54cm
Depth	67cm



Dining Table 0.8m²

Code	CHILT003
Height	74cm
Width	80cm
Depth	80cm



Dining Table 1.2m x 0.7m

Code	CHILT004/S
Height	74cm
Width	120cm
Depth	70cm



Bar Stool

Code	CHILT005
Height	80cm
Width	35cm
Depth	35cm



Bar Table 0.6m²

Code	CHILT006
Height	110cm
Width	60cm
Depth	60cm



Bar Table 0.8m²

Code	CHILT008
Height	110cm
Width	80cm
Depth	80cm



Dining Table 1.5m x 0.8m

Code	CHILT004
Height	74cm
Width	150cm
Depth	80cm



Backless Bench

Code	CHILT002
Height	45cm
Width	130cm
Depth	40cm



Bar Table 1.2m x 0.6m

Code	CHILT007
Height	110cm
Width	120cm
Depth	60cm



Bar Table 1.5m x 0.8m

Code	CHILT009
Height	110cm
Width	150cm
Depth	80cm

MALVERN

The Malvern range features heavy-duty picnic-style furniture built for high-traffic outdoor areas. Available in FSC-treated Pine or durable Acacia hardwood, each space-efficient set comfortably seats 6–8 guests. Designed for stability and longevity, Malvern sets can be securely bolted to patio slabs or decking. Pine versions can be treated or painted to any RAL colour, offering flexibility to match your venue's branding while delivering robust, long-lasting performance.





6ft A-Frame Table

Code	WR301
Height	68cm
Width	180cm
Depth	129cm



6ft A-Frame Accessible Table

Code	WR302
Height	68cm
Width	180cm
Depth	129cm

Accommodates a wheelchair



Roundabout 6 Seater Table

Code	WR014
Height	81cm
Width	200cm
Depth	200cm



Roundabout 8 Seater Table

Code	WR019
Height	77cm
Width	188cm
Depth	188cm



Walk-In Picnic Set

Code (dining)	WR313
Code (poseur)	WR314
Height (dining)	85cm
Height (poseur)	100cm
Width	140cm
Depth	160cm



All Square 8 Seater Table

Code	WR010
Height	81cm
Width	210cm
Depth	210cm



Lakeside Picnic Set

Code	WR060
Height	79cm
Width	180cm
Depth	160cm



Kos Picnic Set

Code	KOS001
Height	76cm
Width	200cm
Depth	140cm



Waiter Station

Code	WR030
Height	110cm
Width	150cm
Depth	70cm

SCAFFOLD

The Scaffold range combines heavy-duty FSC pine tabletops with robust galvanised steel frames for an industrial, hard-wearing finish. Made to order in our workshop, tables, benches and stools can be tailored to your exact size requirements (up to 4m long) and supplied in dining, mid or bar height. Tabletops can be left natural, stained or painted to any RAL colour, with frames also powder coated to match—giving you complete design flexibility for bold, bespoke outdoor spaces.



Sizes made to order

Dining Height Table

Code SCAF001



Sizes made to order

Bar Height Table

Code SCAF001



Sizes made to order

Dining Height Stool/Bench

Code SCAF002



Sizes made to order

Bar Height Stool/Bench

Code SCAF002



GABION

The Gabion range delivers a striking balance of strength and style, ideal for demanding outdoor environments. Fully galvanised steel cages filled with natural stone provide exceptional stability, paired with FSC pine tabletops and bench seating for warmth and comfort. Made to order in our workshop, Gabion tables and benches can be sized to suit your space (maximum 2m). Tabletops can be left natural, stained or painted to any RAL colour—offering durability, impact and design flexibility.



Sizes made to order

Gabion Bar Table

Code GABHIGH



Sizes made to order

Gabion Bar Stool

Code GABHIGH



Sizes made to order

Gabion Dining Table

Code GABDINE



Sizes made to order

Gabion Dining Bench

Code GABDINE



BALI

The Bali range combines refined looks with hospitality-grade durability. Highly resilient synthetic weave is handwoven onto fully welded, powder-coated aluminium frames for low-maintenance, all-weather use. Stone-effect tempered glass tabletops complement the two-tone weave, creating a polished finish. With three generous table sizes and a comfortable armchair featuring fibre-filled cushions, Bali is ideal for large dining terraces. New for 2026, a luxurious upgraded cushion fabric adds even greater comfort and appeal.



Armchair w/Cushion

Code	WR100
Height	86cm
Width	57cm
Depth	65cm



Dining Table 0.9m²

Code	WR102
Height	72cm
Width	90cm
Depth	90cm



Dining Table 1.4m

Code	WR101
Height	72cm
Width	140cm



Dining Table 1.8m x 0.9m

Code	WR103
Height	72cm
Width	180cm
Depth	90cm



HAVANA

Havana is our most popular weave range, designed for flexible, high-use outdoor spaces. The collection includes three stacking chair options and a 90cm square table with a durable, wood-effect aluminium top. Handwoven in a multi-tonal grey half-round weave onto powder-coated aluminium frames, Havana suits a wide range of settings. For relaxed social areas, the 10-seater corner sofa with deep seating and fibre-filled cushions offers standout comfort for larger groups.





Stacking Side Chair Grey

Code	HW522
Height	82cm
Width	46cm
Depth	53cm



Stacking Armchair Grey

Code	HW523
Height	82cm
Width	56cm
Depth	60cm



Stacking Armchair Black

Code	HW453
Height	82cm
Width	56cm
Depth	60cm



Stacking Armchair Grey w/Cushion

Code	HW525
Height	83cm
Width	57cm
Depth	56cm



Dining Table Polywood Top 0.9m²

Code	HW521
Height	75cm
Width	90cm
Depth	90cm



Left Hand Sofa w/Cushions

Code (set)	HW520
Height	88cm
Width	197cm
Depth	63cm



Right Hand Sofa w/Cushions

Code (set)	HW520
Height	88cm
Width	197cm
Depth	63cm



Bench Seat w/Cushion

Code (set)	HW520
Height	55cm
Width	153cm
Depth	35cm



Rectangular Table 1.5m x 0.85m

Code (set)	HW520
Height	87cm
Width	153cm
Depth	85cm



MALDIVES

The Maldives range blends classic charm with contemporary detailing. Traditional basket-style weave chairs are paired with tapered, wood-effect aluminium legs for a refined yet durable finish. Available in multi-tonal grey or brown, the stone-effect tempered glass tabletops add a polished, hard-wearing surface. Generous fibre-filled seat cushions enhance comfort, making Maldives ideal for relaxed, stylish alfresco dining and social spaces.



Armchair Grey w/Cushion

Code	MALD001
Height	87cm
Width	57cm
Depth	63cm



Armchair Brown w/Cushion

Code	MALD006
Height	87cm
Width	57cm
Depth	63cm



Dining Table Grey 0.8m²

Code	MALD004
Height	75cm
Width	81cm
Depth	81cm



Dining Table Brown 0.8m²

Code	MALD007
Height	75cm
Width	81cm
Depth	81cm



Dining Table Grey 1.2m x 0.8m

Code	MALD005
Height	75cm
Width	120cm
Depth	80cm



BORDEAUX

The Bordeaux range is ideal for cafés and bistros where space, durability and easy storage matter. Compact footprints and stacking chairs allow for quick reconfiguration and efficient storage. Exposed aluminium frames are hand-painted in a realistic wood-effect finish, paired with handwoven, hard-wearing rattan seats and backs. Polywood slat tabletops offer a low-maintenance, weather-resistant surface—perfect for busy outdoor settings.





Stacking Armchair

Code	BORD001
Height	90cm
Width	56cm
Depth	59cm



Dining Table 0.7m²

Code	BORD002
Height	74cm
Width	70cm
Depth	70cm



Dining Table 1.3m x 0.7m

Code	BORD003
Height	74cm
Width	130cm
Depth	70cm



Stacking Bistro Chair

Code	HW300
Height	88cm
Width	46cm
Depth	53cm



Bistro Stool Black & White

Code	BORD004
Height	75cm
Width	40cm
Depth	40cm



Bistro Stool Grey

Code	BORD005
Height	75cm
Width	40cm
Depth	40cm

PADSTOW

Padstow is our most popular range, combining on-trend rope design with hospitality-grade durability. The collection includes stacking armchairs, bar stools in mid and bar height, a slimline two-seater sofa, generous sofa sets and an adjustable sunlounger—all with weather-resistant cushions. Designed for year-round outdoor use, Padstow is low maintenance and ideal for high-traffic spaces.

New for 2026, three wood-effect dining tables—square, round and rectangular—add versatility and a refined contemporary finish.







Rope Stacking Armchair

Code	WR251
Height	76cm
Width	56cm
Depth	61cm



Rope Stacking Armchair w/Cushions

Code	WR250
Height	78cm
Width	56cm
Depth	60cm



Wood Effect Armchair w/Cushion

Code	WR259
Height	76cm
Width	56cm
Depth	61cm



Lite Stacking Armchair - Grey

Code	WR266/G
Height	76cm
Width	56cm
Depth	45cm



Lite Stacking Armchair - Beige

Code	WR266/B
Height	76cm
Width	56cm
Depth	45cm



Lite Stacking Armchair - Orange

Code	WR266/O
Height	76cm
Width	56cm
Depth	45cm

NEW
FOR
2026



Wood Effect Alu Table 0.88m²

Code	WR260
Height	74cm
Width	88cm
Depth	88cm



Wood Effect Alu Table 1.5m x 0.88m

Code	WR262
Height	74cm
Width	88cm
Depth	150cm



Wood Effect Alu Table 1.2m²

Code	WR261
Height	74cm
Width	120cm
Depth	120cm

NEW
FOR
2026



Rope Mid & Bar Height Chair w/Cush

Code (mid)	WR253
Code (bar)	WR252
Height (mid)	102cm
Height (bar)	107cm
Width	56cm
Depth	60cm



Rope 2 Seater Sofa w/Cushions

Code	WR249
Height	73cm
Width	161cm
Depth	82cm



Rope 4 Pcs Sofa Set w/Cushions

Code	WR256
Height	70cm
Width	319cm
Depth	152cm



Rope Corner Sofa Set w/Cushions

Code	WR254
Height	70cm
Width	228cm
Depth	145cm



Rope Wood Effect Sofa Set w/Cush

Code	WR255
Height	74cm
Width	360cm
Depth	155cm



Wood Effect Sun Lounger w/Sling

Code	WR257
Height	57cm
Width	75cm
Depth	198cm



Wood Effect Sun Lounger Cushion

Code	WR257/C
Height	5cm
Width	75cm
Depth	198cm

CASABLANCA

The Casablanca range is the ultimate in comfort and luxury. Weatherproof marine grade rope with a thick rubber core allows for faster drying, the Casablanca is built to withstand all weathers. The tactile rope is handwoven onto strong and durable aluminium frames and paired with with fibre filled, weather resistant cushions. There is a side table or coffee table to choose from to compliment the seating, which for 2026 is available in light grey only.

Casablanca is made to order with a 12 week lead time.





Armchair Light Grey w/Cushion

Code	AR7561LG
Height	83cm
Width	72cm
Depth	66cm



Lounge Chair Light Grey w/Cushions

Code	AR7563LG
Height	88cm
Width	88cm
Depth	82cm



2 Seater Sofa Light Grey w/Cushions

Code	AR7562LG
Height	88cm
Width	141cm
Depth	82cm



Coffee Table HPL Top 0.6m

Code	AR7548GRPEB
Height	40cm
Width	60cm



Coffee Table HPL Top 1.2m x 0.85m

Code	AR7547GRPEB
Height	40cm
Width	120cm
Depth	85cm

BUDE

Exclusive to Showpiece Design

The Bude range is a proven favourite for hospitality venues, combining standout style, low maintenance and all-weather durability. Designed for high-traffic outdoor spaces, the stacking chairs and bar seating save space while earthy tones and wipe-clean table tops keep areas looking sharp. Rubber-cored rope dries quickly, aluminium frames reduce upkeep, and new 2026 additions include a vibrant blue finish and a comfortable lounge sofa set for premium alfresco areas.







Side Chair Olive

Code	BUD005/O
Height	82cm
Width	55cm
Depth	47cm



Side Chair Terracotta

Code	BUD005/TE
Height	82cm
Width	55cm
Depth	47cm



Side Chair Grey

Code	BUD005/G
Height	82cm
Width	55cm
Depth	47cm



Side Chair Taupe

Code	BUD005/T
Height	82cm
Width	55cm
Depth	47cm



Side Chair Blue

Code	BUD005/B
Height	82cm
Width	55cm
Depth	47cm

NEW
FOR
2026



Armchair Olive

Code	BUD002/TE
Height	76.5cm
Width	65cm
Depth	57cm



Armchair Terracotta

Code	BUD002/TE
Height	76.5cm
Width	65cm
Depth	57cm



Armchair Grey

Code	BUD002/G
Height	76.5cm
Width	65cm
Depth	57cm



Armchair Taupe

Code	BUD002/T
Height	76.5cm
Width	65cm
Depth	57cm



NEW
FOR
2026



Concrete HPL Top



Wood HPL Top



Composite Stone

Armchair Blue

Code	BUD002/B
Height	76.5cm
Width	65cm
Depth	57cm

Mid & Bar Height Chair Olive

Code (mid)	BUD003/O
Code (bar)	BUD004/O
Height	87cm/97cm
Width	65cm
Depth	57cm

Mid & Bar Height Chair Terracotta

Code (mid)	BUD003/T
Code (bar)	BUD004/T
Height	87cm/97cm
Width	65cm
Depth	57cm

Dining Table 0.75m² Concrete

Code	BUD006/C
Height	75cm
Width	75cm
Depth	75cm

Dining Table 0.75m² Wood

Code	BUD006/W
Height	75cm
Width	75cm
Depth	75cm

Dining Cross Base Table 0.9m

Code	BUD009
Height	75cm
Width	90cm
Depth	90cm



NEW
FOR
2026



NEW
FOR
2026



Composite Stone



Concrete HPL Top



Wood HPL Top

Mid & Bar Height Chair Grey

Code (mid)	BUD003/G
Code (bar)	BUD004/G
Height	87cm/97cm
Width	65cm
Depth	57cm

Mid & Bar Height Chair Blue

Code (mid)	BUD003/B
Code (bar)	BUD004/B
Height	87cm/97cm
Width	65cm
Depth	57cm

Sofa Set w/Ceramic Coffee Table Olive

Code	BUD001
Sofa	H 70 x W 157 x D 68
Chair	H 70 x W 69 x D 68
Table	H 35 x W 60 x D 120

Dining Cross Base Table 0.9m²

Code	BUD010
Height	75cm
Width	90cm
Depth	90cm

Dining Table 1.2m x 0.75m Concrete

Code	BUD007/C
Height	75cm
Width	120cm
Depth	75cm

Dining Table 1.2m x 0.75m Wood

Code	BUD007/W
Height	75cm
Width	120cm
Depth	75cm



Concrete HPL Top



Wood HPL Top

Dining Table 1.5m x 0.75m Concrete

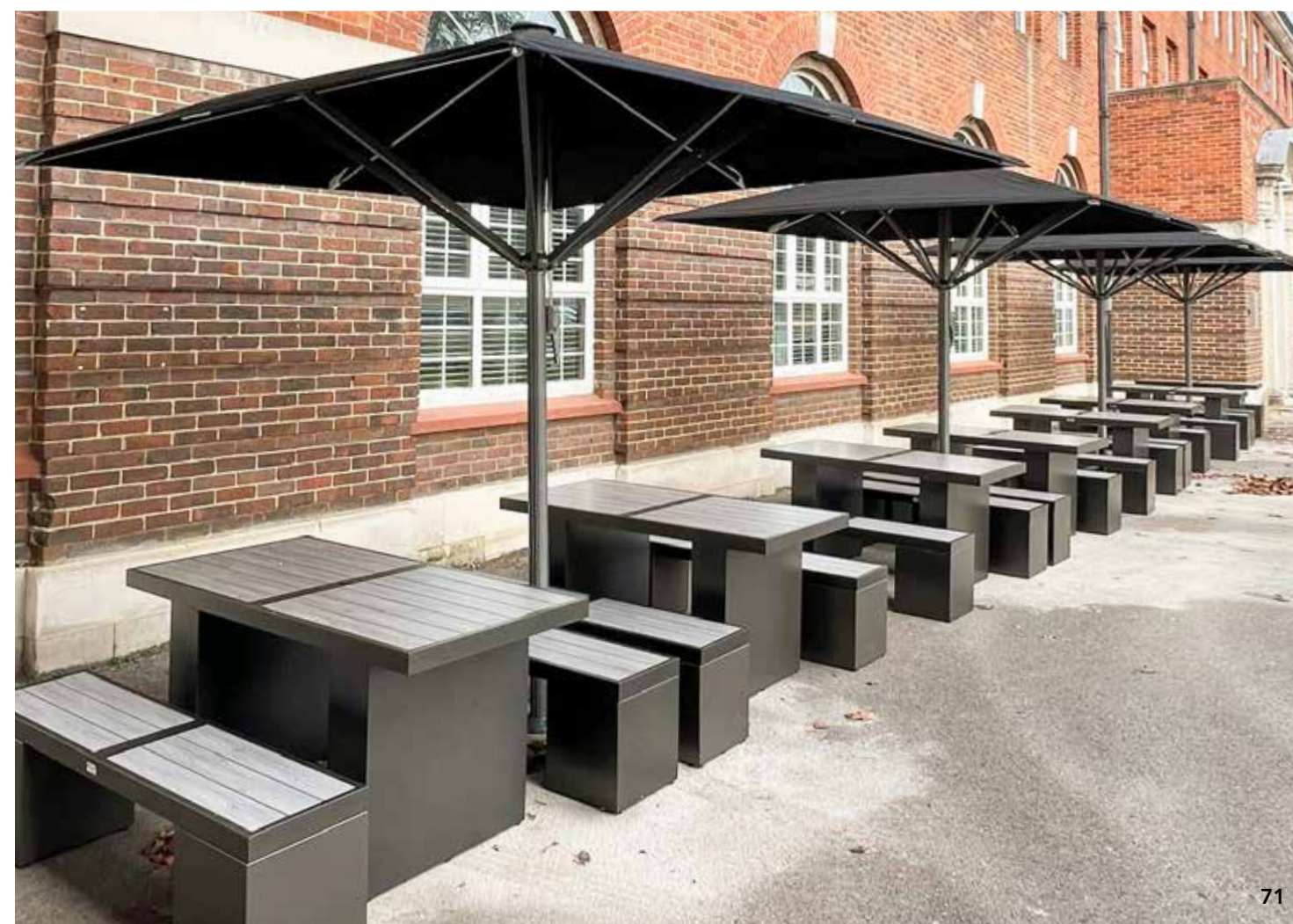
Code	BUD008/C
Height	75cm
Width	150cm
Depth	75cm

Dining Table 1.5m x 0.75m Wood

Code	BUD008/W
Height	75cm
Width	150cm
Depth	75cm

ZANZIBAR

The Zanzibar range is a fully aluminium solution designed for low maintenance, year-round outdoor use. Powder-coated frames offer durability and weather resistance, with the option to fix furniture securely to patios or decking where security is key. Modular designs allow flexible layouts, easily paired to create larger dining settings. Available in dining and bar heights, the generous Farmer's set features a traditional cross base and comfortably seats up to eight guests.





Dining Table 0.9m2

Code	ZB004
Height	72cm
Width	90cm
Depth	90cm



Dining Table 1.5m x 0.9m

Code	ZB001
Height	72cm
Width	150cm
Depth	90cm



Dining Table Triangular 1.25m

Code	ZB005
Height	72cm
Width	125cm
Depth	125cm



Stool

Code	ZB014
Height	42cm
Width	44cm
Depth	44cm



Bench Seat 100cm & 150cm

Code (100cm)	ZB015
Code (150cm)	ZB011
Height	42cm
Width (100cm)	100cm
Width (150cm)	150cm
Depth	35cm



Bar Table 1.5m x 0.9m

Code	ZB003
Height	110cm
Width	150cm
Depth	90cm



Bar Height Bench 1.5m

Code	ZB013
Height	70cm
Width	150cm
Depth	35cm



Farmers Dining Table 1.8m x 0.85m

Code	FM005
Height	75cm
Width	180cm
Depth	85cm



Farmers Dining Bench 1.8m

Code	FM006
Height	42cm
Width	180cm
Depth	40cm

VENICE

The Venice range delivers stylish simplicity with low-maintenance, hospitality-ready design. Brushed aluminium frames are paired with hand-painted wood-effect aluminium slats for a clean, contemporary look that's easy to care for. Chairs, tables and benches are available in grey, with select pieces also offered in black or on-trend tan with Polywood slats. The modular Venice sofa completes the collection, configurable to suit your space—from a classic two-seater to a relaxed corner layout.





Stacking Armchair Black

Code	VC003
Height	88cm
Width	54cm
Depth	57cm



Stacking Armchair Tan

Code	VC004
Height	88cm
Width	54cm
Depth	57cm



Stacking Armchair Grey

Code	BA009
Height	88cm
Width	54cm
Depth	57cm



Bar Chair Grey

Code	BA007
Height	113cm
Width	46cm
Depth	51cm



Bar Table Grey 0.7m²

Code	BA008
Height	110cm
Width	70cm
Depth	70cm



Dining Table Black 0.8m²

Code	VC013
Height	76cm
Width	80cm
Depth	80cm



Dining Table Tan 0.8m²

Code	VC014
Height	76cm
Width	80cm
Depth	80cm



Dining Table Grey 0.9m²

Code	BA010
Height	76cm
Width	90cm
Depth	90cm



Dining Table Grey 1.8m x 0.9m

Code	BA013
Height	76cm
Width	180cm
Depth	90cm



Backless Bench Grey 1.5m

Code	BA014
Height	45cm
Width	150cm
Depth	40cm



Modular Single Unit w/Cushions

Code	VC022
Height	65cm
Width	71cm
Depth	80cm



Modular Corner Unit w/Cushions

Code	VC021
Height	65cm
Width	80cm
Depth	80cm



Coffee Table 1.05m x 0.65m

Code	VC020
Height	46cm
Width	105cm
Depth	65cm

TOULOUSE

Toulouse is our most popular metal collection, perfect for venues looking to add colour and personality to their alfresco spaces. Available in six stocked shades—including distinctive vintage finishes with exposed framework—or the chairs and stools can be powder coated to any RAL colour offering full design flexibility. The Toulouse Bar Chair comes in mid and bar height, with an optional seat pad for added comfort. The signature firepit table creates a striking focal point, enhancing atmosphere and encouraging guests to linger.







Vintage Finish

Armchair Black

Code	TLAC001
Height	85cm
Width	39cm
Depth	48cm



Vintage Finish

Armchair White

Code	TLAC002
Height	85cm
Width	39cm
Depth	48cm



Vintage Finish

Armchair Light Blue

Code	TLAC003
Height	85cm
Width	39cm
Depth	48cm



Vintage Finish

Round Dining Table Black 0.7m

Code	TLDTR00170
Height	75cm
Width	70cm



Vintage Finish

Round Dining Table White 0.7m

Code	TLDTR00270
Height	75cm
Width	70cm



Concrete HPL

Pedestal Dining Table 0.7m²

Code	CHA010
Height	75cm
Width	70cm
Depth	70cm



Vintage Finish

Armchair Olive Green

Code	TLAC004
Height	85cm
Width	39cm
Depth	48cm



Vintage Finish

Armchair Yellow

Code	TLAC005
Height	85cm
Width	39cm
Depth	48cm



Vintage Finish

Armchair Grey

Code	TLAC007
Height	85cm
Width	39cm
Depth	48cm



Vintage Finish

Square Dining Table Black 0.7m²

Code	TLDTS00170
Height	75cm
Width	70cm
Depth	70cm



Vintage Finish

Square Dining Table White 0.7m²

Code	TLDTS00270
Height	75cm
Width	70cm
Depth	70cm



Vintage Finish

Mid/Bar Height Chair Light Blue

Code (mid)	TLAC003/MH
Code (bar)	TLAC003/PH
Height (mid)	108cm
Height (bar)	117cm
Width	62cm
Depth	57cm



Vintage Finish

Mid/Bar Height Chair White

Code (mid)	TLMH002
Code (bar)	TLAC002/PH
Height (mid)	108cm
Height (bar)	117cm
Width	62cm
Depth	57cm



Vintage Finish

Mid/Bar Height Chair Olive Green

Code (mid)	TLAC004/MH
Code (bar)	TLC004/PH
Height (mid)	108cm
Height (bar)	117cm
Width	62cm
Depth	57cm



Vintage Finish

Square Bar Table Black 0.7m²

Code	TLBTS00170
Height	105cm
Width	70cm
Depth	70cm



Vintage Finish

Round Bar Table Black 0.7m

Code	TLBTR00170
Height	105cm
Width	70cm



Vintage Finish

Pedestal Bar Height Table 0.7m²

Code	CHA011
Height	111cm
Width	70cm
Depth	70cm
HPL top	



Seat Pad for Armchair/Mid/Bar

Code	TLACCUSH
------	----------



Vintage Finish

Swivel Stool White

Code	VINT014
Height	62-80cm
Width	34cm
Depth	34cm



Vintage Finish

Swivel Stool Grey

Code	VINT017
Height	62-80cm
Width	34cm
Depth	34cm



Ceramic Top

Bar Height Fire Pit Table 1.2m²

Code	CHA040
Height	105cm
Width	120cm
Depth	120cm



Vintage Finish

Swivel Stool Pink

Code	VINT016
Height	62-80cm
Width	34cm
Depth	34cm



Vintage Finish

Swivel Stool Green

Code	VINT018
Height	62-80cm
Width	34cm
Depth	34cm



Cannes Bar Stool

Code	CAN001
Height	65cm
Width	60cm
Depth	35cm

MADRID

The Madrid range is a practical, hard-wearing solution for restaurants, bistros and cafés. Designed for durability and virtually maintenance free, it's ideal for busy outdoor areas. Available in a vibrant range of colours, Madrid adds instant impact to any space. Stackable chairs, bar stools and tables make setup, storage and reconfiguration quick and efficient—helping your outdoor area work harder, all season long.





Polished Finish

Stacking Armchair Black

Code	PA204
Height	85cm
Width	57cm
Depth	60cm



Polished Finish

Stacking Armchair Grey

Code	PA202
Height	85cm
Width	57cm
Depth	60cm



Polished Finish

Stacking Armchair Blue

Code	PA200
Height	85cm
Width	57cm
Depth	60cm



Matt Finish

Stacking Side Chair Black

Code	PA220
Height	83cm
Width	43cm
Depth	57cm



Matt Finish

Stacking Side Chair Orange

Code	PA221
Height	83cm
Width	43cm
Depth	57cm



Matt Finish

Stacking Side Chair Army Green

Code	PA219
Height	83cm
Width	43cm
Depth	57cm



Polished Finish

Square Table Black 0.8m²

Code	PA214
Height	73cm
Width	80cm
Depth	80cm



Polished Finish

Square Table Grey 0.8m²

Code	PA212
Height	73cm
Width	80cm
Depth	80cm



Square Table Blue 0.8m²

Code	PA210
Height	73cm
Width	80cm
Depth	80cm



Matt Finish

Stacking Side Chair Mustard

Code	PA218
Height	83cm
Width	43cm
Depth	57cm



Matt Finish

Bar Chair Black

Code	PA223
Height	104cm
Width	44cm
Depth	50cm



Matt Finish

Bar Chair Orange

Code	PA224
Height	104cm
Width	44cm
Depth	50cm



Matt Finish

Bar Chair Army Green

Code	PA226
Height	104cm
Width	44cm
Depth	50cm



Matt Finish

Bar Chair Mustard

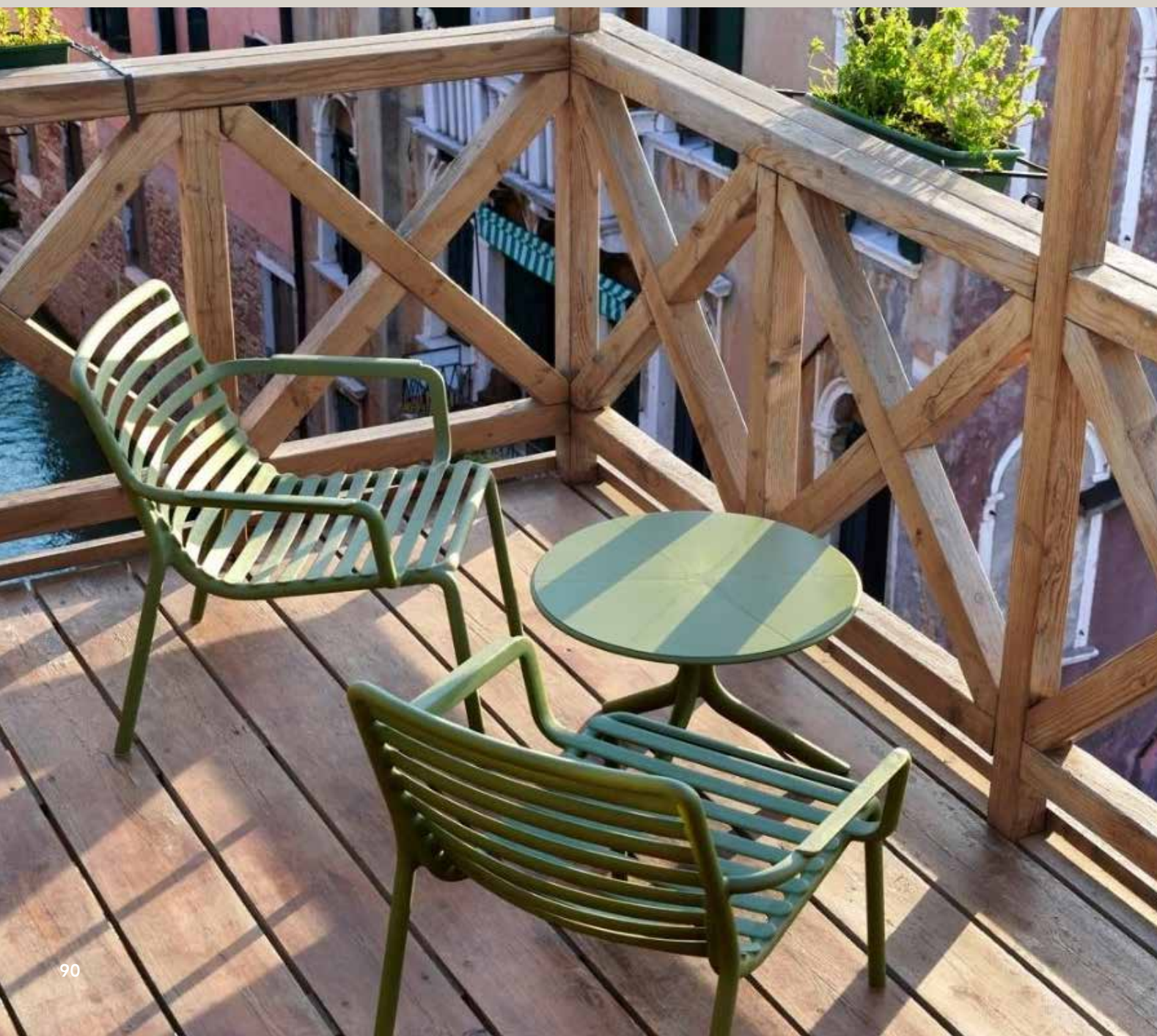
Code	PA228
Height	104cm
Width	44cm
Depth	50cm

NEW FOR
2026

LUGO

Polypropylene

Designed for busy hospitality spaces, our polypropylene furniture combines durability, flexibility and modern style. Lightweight and easy to move, it suits fast-paced service, while stackable designs maximise storage. Despite its light feel, each piece is robust enough for daily commercial use. Available in a wide range of colours and designs, it's a cost-effective and affordable way to refresh, zone and future-proof high-traffic outdoor areas.





Vox Side Chair Black

Code	PP004
Height	80cm
Width	44cm
Depth	46cm



Vox Side Chair Grey

Code	PP005
Height	80cm
Width	44cm
Depth	46cm



Vox Side Chair Jute

Code	PP006
Height	80cm
Width	44cm
Depth	46cm



Nett Bar Chair

Code	PA400
Height	102cm
Width	49cm
Depth	53cm



Net Mid Height Chair

Code	PA401
Height	102cm
Width	49cm
Depth	53cm



Roma Bar Chair

Code	PP018
Height	109cm
Width	45cm
Depth	53cm



Alma Armchair Black

Code	PP009
Height	80cm
Width	57cm
Depth	58cm



Alma Armchair Nickel

Code	PP010
Height	80cm
Width	57cm
Depth	58cm



Alma Armchair Olive

Code	PP011
Height	80cm
Width	57cm
Depth	58cm



Blink Bar Chair Anthracite

Code	PP019
Height	100cm
Width	50cm
Depth	53cm



Blink Bar Chair Dove Grey

Code	PP020
Height	100cm
Width	44cm
Depth	50cm



Blink Bar Chair Saxe Blue

Code	PP021
Height	100cm
Width	44cm
Depth	50cm



Alma Armchair Chilli

Code	PA012
Height	80cm
Width	57cm
Depth	58cm



Alma Armchair Saffron

Code	PA013
Height	80cm
Width	57cm
Depth	58cm



Doga Relax Chair Anthracite

Code	PP022
Height	76cm
Width	70cm
Depth	76cm



Doga relax Chair Olive

Code	PP023
Height	76cm
Width	70cm
Depth	76cm

TABLE TOPS

Step 1: Choose your tabletop

Select your material, shape and size to suit your space and service style.

Available materials: Timber, Porcelain, Marble, HPL, Werzalit

Shapes: Square, Rectangular, Round

Derwen (Timber)

Square: 580 × 580mm, 725 × 725mm

Rectangular: 1200 × 725mm

Round: 700mm, 800mm

Porcelain

Square: 600 × 600mm, 700 × 700mm

Round: 600mm, 700mm

Solid Marble

Square: 500 × 500mm, 600 × 600mm, 700 × 700mm, 800 × 800mm

Rectangular: 1200 × 700mm

Round: 500mm, 600mm, 700mm, 800mm

High Pressue Laminate (HPL)

Square: 590 × 590mm, 690 × 690mm, 790 × 790mm

Rectangular: 1200 × 690mm

Round: 590mm, 690mm, 790mm

Werzalit

Square: 600 × 600mm, 700 × 700mm, 800 × 800mm

Rectangular: 1100 × 700mm, 1200 × 800mm

Round: 600mm, 700mm, 800mm

TABLE TOPS



Robinia Timber Square

Code PA106/S/T

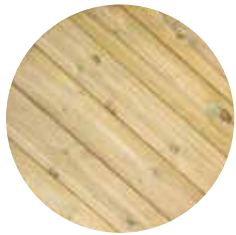
Width/Depth 70cm

Code PA108/S/T

Width/Depth 80cm



Derwen Timber Square/Rectangular

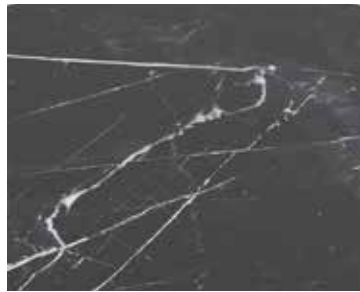


Derwen Timber Round



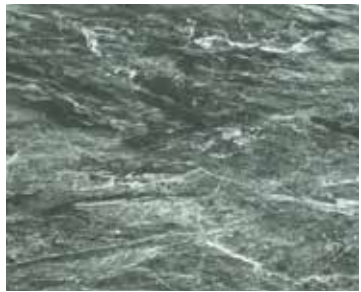
Porcelain Azure

Depth 12mm



Porcelain Black Calacatta

Depth 12mm



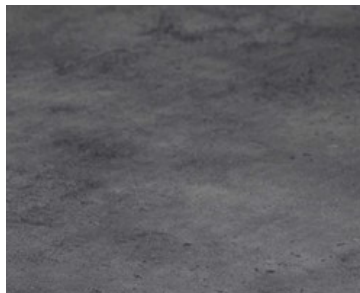
Porcelain Verde Alpi

Depth 12mm



Solid Carrera Marble

Depth 20mm



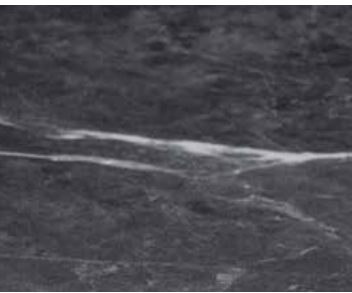
HPL Metallic Anthracite

Depth 12mm



HPL Marble

Depth 12mm



HPL Marquina Marble

Depth 12mm



HPL Terazzo

Depth 12mm

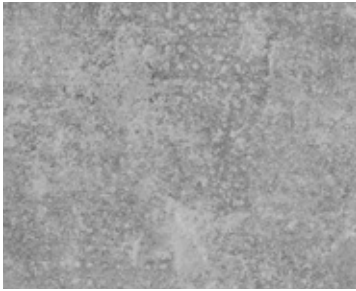


HPL Golden Rust

Depth 12mm



TABLE TOPS



HPL Rustic Concrete
Depth 12mm



HPL Vintage Wood
Depth 12mm



Werzalit Ponderosa Grey
Depth 27mm



Werzalit Boston
Depth 27mm



Werzalit Marble of Sicily
Depth 27mm



Werzalit City
Depth 27mm



TABLE BASES

STEP 2: Choose your table base
Select a table base to suit your chosen tabletop

Our table bases are compatible with all timber, porcelain, marble, HPL and Werzalit tabletops featured on pages 95-97. Available in dining and bar height, with a choice of traditional or contemporary designs, they allow you to create the ideal look and layout for your venue.. Our Cubic base can accomodate a parasol.

TABLE BASES



D cor Rectangular Dining Black
Code DECORRECT
Height 73cm
Width 91cm
Depth 60cm



D cor Dining Black
Code DECORBASE
Height 73cm
Width 60cm
Depth 60cm



D cor Bar Black
Code DECORPOS
Height 109cm
Width 55cm
Depth 55cm



Rustic Barrel
Code WR200
Height 100cm
Width 80cm
Depth 80cm



Tulip Dining Height
Code TUL001
Height 72cm
Width 55cm
Depth 55cm



Tulip Bar Height
Code TUL002
Height 104cm
Width 55cm
Depth 55cm



Regency Flip Top Dining Height
Code REG001/2/3
Height 72cm
Width 48cm
Depth 48cm
Available in Black, Silver & White



Regency Flip Top Bar
Code REG010/11/12
Height 105cm
Width 48cm
Depth 48cm
Available in Black, Silver & White



Mesh Dining Height
Code MESH001
Height 74cm
Width 52cm



Forza Coffee Height
Code FOR001
Height 48cm
Width 45cm
Depth 45cm



Forza Dining Height
Code FOR003
Height 73cm
Width 45cm
Depth 45cm



Forza Bar Height
Code FOR002
Height 105cm
Width 45cm
Depth 45cm



Tudor Dining Height
Code TUD001
Height 72cm
Width 55cm
Depth 55cm



Apex Dining Height
Code APEX001
Height 72cm
Width 60cm
Depth 60cm



Cubic Dining Height
Code CUB001
Height 72cm
Width 50cm
Depth 50cm
Accommodates a parasol
Max 40mm mast



CLASSIC PARASOLS

Our hardwood parasols combine classic style with everyday practicality. Easy to operate using a pulley and locking pin system, they feature FSC-certified hardwood frames and durable polyester canopies with Scotchgard treatment and UV resistance to grade 6. Available in 10 vibrant stocked colours, the canopies can also be branded with your logo, helping provide shade, protect guests and reinforce your venue’s identity outdoors.



CLASSIC PARASOLS & BASES



2.1m Parasol - Cream

Code UM008/C



2.1m Parasol - Taupe

Code UM008/TA



2.1m Parasol - Yellow

Code UM008/Y



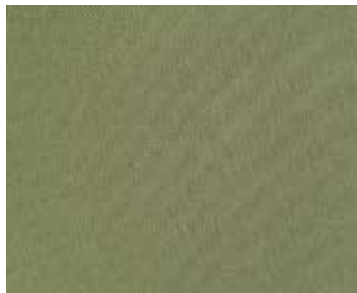
2.1m Parasol - Orange

Code UM008/ORG



2.1m Parasol - Navy Blue

Code UM008/B



2.1m Parasol - Sage Green

Code UM008/SAGE



2.1m Parasol - Green

Code UM008/G



2.1m Parasol - Black

Code UM008/BL



2.1m Parasol - Dark Grey

Code UM008/DG



2.1m Parasol - Aqua

Code UM008/AQ



Composite Base 15kg

Code UM024



Metal Base 22kg

Code UM020

NEW FOR
2026

BOHO PARASOLS

New for 2026, our Boho parasols bring relaxed, design-led style to commercial outdoor spaces. Handcrafted and finished with distinctive tasselled detailing, they create instant atmosphere while delivering reliable shade for hospitality settings. Designed to stand out from standard contract parasols, the Boho range is ideal for venues looking to elevate terraces, courtyards and poolside areas with a softer, more curated aesthetic—perfect for destination pubs, hotels, beach clubs and lifestyle-led hospitality spaces.



Louis 1.8m Parasol
Code BOH001



Betty 1.8m Parasol
Code BOH002



Mary 1.8m Parasol
Code BOH003



Rupert 1.8m Parasol
Code BOH004



Freddie 1.8m Parasol
Code BOH005



STAINLESS STEEL ARUBA PARASOLS

Our stainless steel parasols are built for strength, reliability and ease of use. A simple push-up and locking pin system allows quick operation, while the 48mm single-piece pole delivers superior stability compared to two-piece designs. Reinforced spokes provide confidence in windy conditions, with replaceable spare parts available. Finished with a 300gsm polyester canopy offering UV resistance to grade 6, they're stocked in two vibrant colours, with bespoke canopies available in Recasens high-performance outdoor fabric.



2.1m Parasol - Black
Code UM210/B



2.5m Parasol - Red
Code UM250/R



Recasens - Titanio
Code R-196



Recasens - Antracita
Code R-164



Recasens - Argent Tweed
Code R-293



Recasens - White Blue
Code R-016



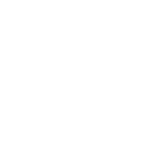
Recasens - White Green
Code R-014



Recasens - Blanco Gris
Code R-061



Composite Base 15kg
Code UM024



Metal Base 22kg
Code UM020

ALUMINIUM CAFÉ PARASOLS

The Café parasol is a premium, lightweight aluminium solution designed for year-round outdoor use. Effortless opening is achieved via a smooth pulley system, while the compact vertical fold allows neat, space-saving storage when closed. With multiple base options—including in-ground sleeve, deckplate or weighted base—it suits a wide range of settings. When ground anchored, the Café parasol withstands winds up to 60 km/h, making it ideal for exposed terraces and demanding hospitality environments.



Round Parasol

Code (2.8m) UMI280
Code (4.2m) UMI420



Square Parasol

Code (2.0m) UMI200
Code (3.0m) UMI300



Galvanised Steel Base

Code UMI201



Concrete Base

Code UMI202



In-Ground Base

Code UMI203

Standard Colours



Non Standard Colours



CANTILEVER PARASOLS

Our heavy-duty cantilever parasols maximise usable outdoor space by providing wide shade coverage with no central mast. Featuring 360° rotation and unlimited tilt, they allow precise sun control throughout the day. Installation options include an in-ground sleeve, deckplate or weighted freestanding base. When ground anchored, they withstand winds up to 65 km/h, with an optional stabiliser bar available for more exposed locations—making them a robust, high-performance shading solution for hospitality terraces.



CANTILEVER PARASOLS



Square Cantilever

Code (3.0m) UMIC300
Code (3.5m) UMIC350

Round Cantilever

Code (4.0m) UMIC400

Rectangular Cantilever

Code (3.0m x 4.0m) UMIC430



Freestanding Base

Code UMIC204



Stainless Steel Base Plate

Code UMIC205



In-Ground Base

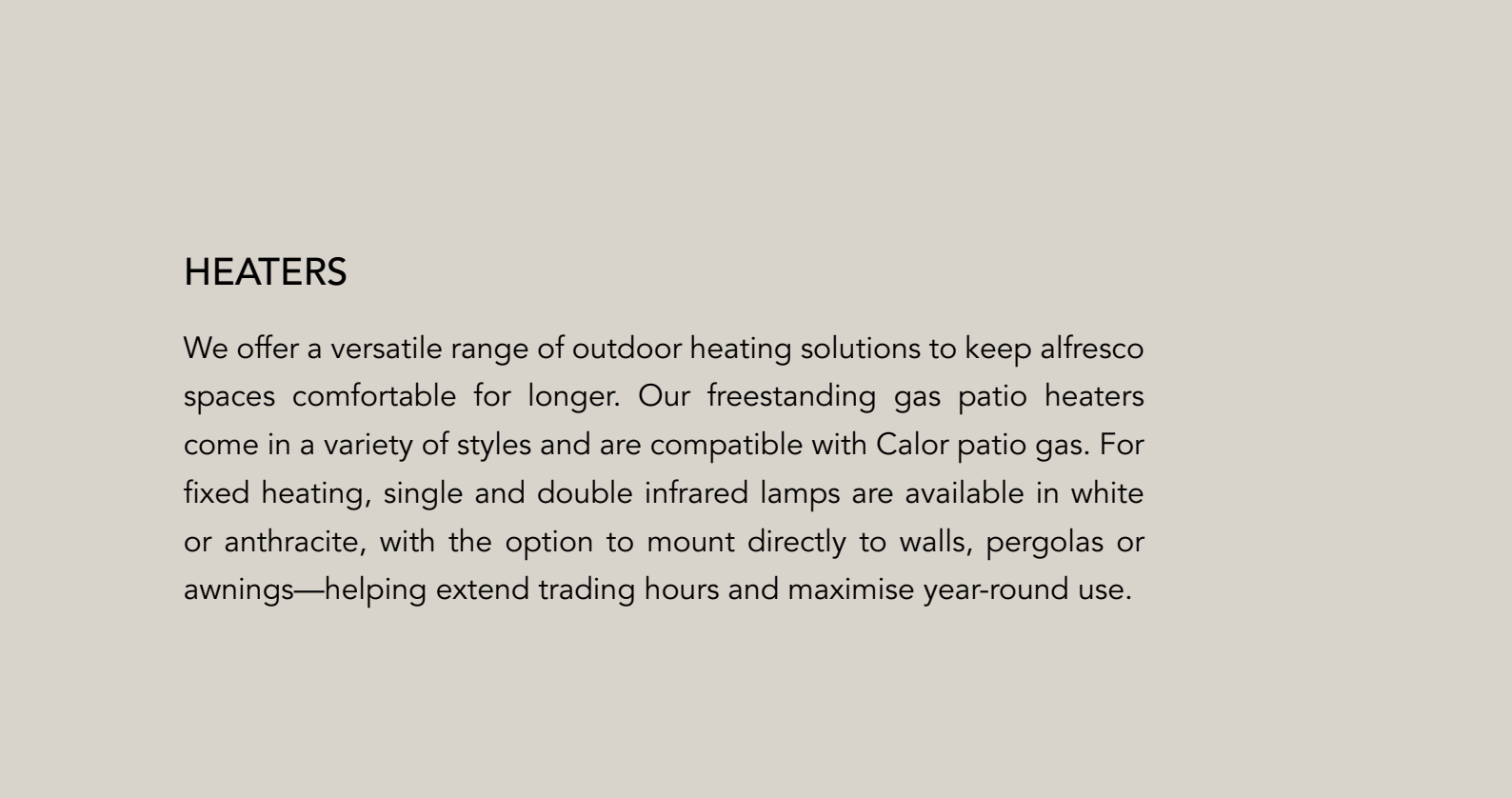
Code UMIC206

Standard Colours



Non Standard Colours





HEATERS

We offer a versatile range of outdoor heating solutions to keep alfresco spaces comfortable for longer. Our freestanding gas patio heaters come in a variety of styles and are compatible with Calor patio gas. For fixed heating, single and double infrared lamps are available in white or anthracite, with the option to mount directly to walls, pergolas or awnings—helping extend trading hours and maximise year-round use.



HEATERS



Pyramid Gas Heater 11kw

Code	SH016
Height	220cm
Width	53cm
Depth	53cm



Coliseum Gas Heater 15kw

Code	SH030
Height	210cm
Width	54cm
Depth	54cm



Cube Gas Heater 5kw

Code	SH025
Height	126cm
Width	42cm
Depth	42cm



Goliath Gas Heater 15kw

Code	SH022
Height	230cm
Width	88cm
Depth	88cm



Athena Gas Heater 8kw

Code	SH035
Height	218cm
Width	75cm
Depth	75cm



Quartz Heat Lamp 1.5kw

Code (white)	UMB/H/QL
Width	52cm
Code (black)	UMB/H/QL/B
Width	52cm



Double Quartz Heat Lamp 3kw

Width	104cm
-------	-------



Timer Switch 3kw

Timer Switch 6kw

BANNERS

Our banner systems provide both practical partitioning and high-impact branding. Available in vinyl, fabric or acrylic, each banner can be digitally printed and personalised with your logo. Robust stainless steel uprights and heavy-duty cross beams ensure long-lasting performance, even in harsh weather—helping define outdoor areas, add privacy and reinforce your brand in any season.



Vinyl Screens

Code	BP021
Width/Height	120cm x 90cm
Width/Height	150cm x 90cm
Width/Height	180cm x 90cm

Custom graphics

Fabric Screens

Code	BP023
Width/Height	120cm x 90cm
Width/Height	150cm x 90cm
Width/Height	180cm x 90cm

Custom graphics

Acrylic Screens

Code	BP030
Width/Height	120cm x 90cm
Width/Height	150cm x 90cm
Width/Height	180cm x 90cm

Custom graphics



Stainless Steel Post 16kg

Code	BP001
Height	100cm
Width	35cm
Pole DM	5cm



Quad Steel Post Black 19kg

Code	QP001
Height	100cm
Width	40cm
Pole DM	6cm



METAL PLANTERS

Our planters offer a stylish, flexible way to zone outdoor spaces while adding colour and character. A great alternative to banners, these heavy-duty planters are available in five on-trend colours, multiple sizes and can be stacked to create eye-catching features. Logos can also be applied, making them ideal for adding privacy, softening spaces and reinforcing your brand across alfresco areas.



METAL PLANTERS



Stacking Planter 40cm Small

Code	HEX001
Height	20cm
Width	40cm
Depth	40cm



Stacking Planter 40cm Medium

Code	HEX001
Height	40cm
Width	40cm
Depth	40cm



Stacking Planter 40cm Large

Code	HEX001
Height	80cm
Width	40cm
Depth	40cm



Stacking Planter 80cm Small

Code	HEX001
Height	20cm
Width	80cm
Depth	40cm



Stacking Planter 80cm Medium

Code	HEX001
Height	40cm
Width	80cm
Depth	40cm



Stacking Planter 80cm Large

Code	HEX001
Height	80cm
Width	80cm
Depth	40cm



Stacking Planter 120cm Small

Code	HEX001
Height	20cm
Width	120cm
Depth	40cm



Stacking Planter 120cm Medium

Code	HEX001
Height	40cm
Width	120cm
Depth	40cm



Stacking Planter 120cm Large

Code	HEX001
Height	80cm
Width	120cm
Depth	40cm

TIMBER PLANTERS

Our timber planters are crafted from FSC-certified pine and offer a practical, flexible way to zone and enhance outdoor spaces. Available in square and rectangular designs, they can be supplied in a rustic pine finish or painted to any RAL colour. Logos can be added, and optional castors allow for easy movement—giving you the freedom to adapt layouts as needed.



Square Planter

Code	SPT001
Height	102cm
Width	50cm
Depth	50cm

RAL painting &
custom graphics available



Rectangular Planter

Code	RPT002
Height	100cm
Width	121cm
Depth	46cm

RAL painting &
custom graphics available



CUSHION BOXES

Our cushion boxes provide a smart, weatherproof solution for protecting outdoor cushions. Available in synthetic weave or robust aluminium, they're designed for durability and ease of use. Weave boxes come pre-lined with weatherproof canvas, while aluminium options are fully watertight—keeping cushions dry, protected and ready to use, whatever the weather.



CUSHION BOXES



Weave Cushion Box Large

Code (grey)	CBOX001
Height	95cm
Width	170cm
Depth	80cm



Weave Cushion Box Large

Code (sand)	CBOX001
Height	95cm
Width	170cm
Depth	80cm



Aluminium Cushion Box Medium

Code (grey)	CBOX001
Height	78cm
Width	127cm
Depth	66cm



Aluminium Cushion Box Medium

Code (green)	CBOX001
Height	78cm
Width	127cm
Depth	66cm



Aluminium Cushion Box Large

Code (grey)	CBOX001
Height	92cm
Width	160cm
Depth	86cm



Aluminium Cushion Box Large

Code (green)	CBOX001
Height	92cm
Width	160cm
Depth	86cm

UMBRELLAS

Our German-engineered jumbo umbrellas make a statement — and make your outdoor space work harder. Spanning up to 56 m², they offer impressive cover for dining, drinking, and events in sun, rain, or wind. For exposed or coastal sites we have the Albatros, wind tested to 120km/hr. Choose from over 40 canopy colours, add your logo for brand impact, and enhance with LED lights, heaters, phone chargers, or speakers. Available as ground-anchored or free-standing models, with a winter refurbishment service to keep them looking fresh and guest-ready year after year.



AWNINGS

Crafted here in the UK, our awnings combine lasting quality with stylish practicality — helping you make the most of your terrace or outdoor area. Available in traditional manual or smooth motorised options, each system can be tailored to your space and brand. Choose from wall-mounted, goal post, or butterfly styles, and add heating, lighting, or sun and wind sensors for effortless comfort. With options to customise colours and canopy branding, our awnings create welcoming, weather-ready spaces that attract guests, showcase your venue, and keep your outdoor areas working all year round.



ROOF SYSTEMS

Corradi roof systems let you make the most of every square metre — creating all-season covered areas that boost turnover and guest satisfaction. With heat and light options for cosy evenings and winter events, many of our clients see a full return on investment within a year. Each system is fully motorised and customisable in size, colour, and finish, with a choice of retractable weatherproof fabric roofs (aka Pergotenda) or rotating louvre blades (aka Bioclimatic) for complete control. Add side closures such as sliding glass doors or retractable blinds to create versatile, weather-proof spaces you can use — and hire out — all year round.





PERGOLAS

Our pergolas turn terraces and gardens into all-weather spaces guests can enjoy day and night. The adjustable louvre roof opens for sunshine or closes to form a watertight space, giving you control in every season. Add heat, light, and side closures like sliding glass doors or privacy blinds for year-round comfort. Available in multiple sizes and fully installed by our team, pergolas can be linked for larger areas — helping you increase cover, boost guest satisfaction, and grow revenue.





Pergola 3.0m x 3.0m

Code (LED)	PERG001/L
Code (Non-LED)	PERG001
Height	250cm
Width	300cm
Depth	300cm
Anthracite, Pebble, Wood Effect	



Pergola 3.6m x 3.0m

Code (LED)	PERG007/L
Code (Non-LED)	PERG007
Height	250cm
Width	360cm
Depth	300cm
Anthracite, Pebble	



Pergola 3.6m x 3.6m

Code (LED)	PERG002/L
Code (Non-LED)	PERG002
Height	250cm
Width	360cm
Depth	360cm
Anthracite	



Pergola 7.2m x 3.6m

Code (LED)	PERG012/L
Code (Non-LED)	PERG012
Height	250cm
Width	720cm
Depth	360cm
Anthracite, Pebble	



Pergola 8.0m x 3.0m

Code (LED)	PERG013/L
Code (Non-LED)	PERG013
Height	250cm
Width	800cm
Depth	300cm
Anthracite	



Pergola 9.0m x 3.0m

Code (LED)	PERG014/L
Code (Non-LED)	PERG014
Height	250cm
Width	900cm
Depth	300cm
Anthracite	



Pergola 4.0m x 3.0m

Code (LED)	PERG003/L
Code (Non-LED)	PERG003
Height	250cm
Width	400cm
Depth	300cm
Anthracite, Pebble, Wood Effect	



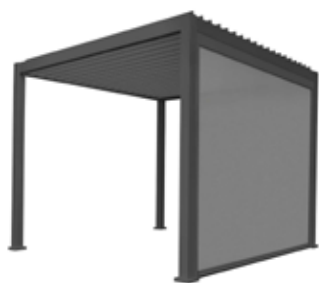
Pergola 4.0m x 3.6m

Code (LED)	PERG008/L
Code (Non-LED)	PERG008
Height	250cm
Width	400cm
Depth	360cm
Anthracite, Pebble	



Pergola 5.3m x 3.0m

Code (LED)	PERG009/L
Code (Non-LED)	PERG009
Height	250cm
Width	530cm
Depth	300cm
Anthracite	



Privacy Screen

Code (3.0m)	PERG005
Code (3.6m)	PERG015
Code (4.0m)	PERG006
Anthracite, Pebble	



Louvered Side Wall

Code (1.0m)	PERG016
Code (1.2m)	PERG017
Code (1.33m)	PERG018
Anthracite, Pebble	



Solid Wall Panel

Code	PERG019
Width	31cm
Anthracite, Pebble, Wood Effect	



Pergola 5.3m x 3.6m

Code (LED)	PERG010/L
Code (Non-LED)	PERG010
Height	250cm
Width	530cm
Depth	360cm
Anthracite	



Pergola 6.0m x 3.0m

Code (LED)	PERG004/L
Code (Non-LED)	PERG004
Height	250cm
Width	600cm
Depth	300cm
Anthracite, Pebble, Wood Effect	



Pergola 6.0m x 3.6m

Code (LED)	PERG011/L
Code (Non-LED)	PERG011
Height	250cm
Width	600cm
Depth	360cm
Anthracite, Pebble	



Sliding Glass Doors

Code (3.0m)	PERG020
Code (3.6m)	PERG021
Code (4.0m)	PERG023
Anthracite, Pebble	

Frame Colours Available

Anthracite

Pebble

Wood Effect

GAZEBO SIDE SHEETS

Our weatherproof side sheets transform open gazebos into sheltered, all-season spaces. Designed for use with both metal and timber structures, they provide effective protection from wind, rain and cooler temperatures, helping venues extend outdoor use year-round. Integrated clear vision panels maintain light and visibility, while optional roll-up doors allow easy access in busy hospitality settings. Available in a range of fabric colours and panel sizes, each system is tailored to your space and professionally installed by our team.



TERMS & CONDITIONS

1 Interpretation in these Conditions:

‘BUYER’ or ‘YOU’ means the person who accepts a quotation of the Seller for the sale of the ‘Goods’ and whose acceptance is then confirmed by the Seller in accordance with these conditions or whose order for the ‘Goods’ is accepted by the seller

‘GOODS’ means the goods (including any installment of the goods or any parts for them) which the seller is to supply in accordance with these conditions

‘SELLER’ or ‘WE’ or ‘US’ or ‘OUR’ means SHOWPIECE DESIGN LIMITED

‘CONDITIONS’ means the standard terms and conditions of sale set out in this document and (unless the context otherwise requires) includes any special terms and conditions agreed in writing between the buyer and the Seller or set out in the Quotation Order or Acceptance Forms issued by the Seller • ‘CONTRACT’ means the contract for the purchase and sale of the Goods

‘WRITING’ includes telex, cable, e-mail, facsimile transmission and comparable means of communication

Any reference in these Conditions to any provision of a Statute shall be construed as a reference to that provision as amended, re-enacted or extended at that relevant time.

The headings in these Conditions are for convenience only and shall not affect their interpretation.

2 Updating Range

Our range of products is continually being revised and updated. We reserve the right to change specifications without prior notice.

3 Specifications

All descriptions, illustrations and sizes given in this catalogue are for guidance only and no particulars therein shall be binding on the company.

4 Samples

Prior to a bulk order, we are able to supply samples on selected items. Please call for details.

5 Price/Discounts

All prices are quoted exclusive of VAT. Please refer to ordering information for details. Showpiece Design Limited reserves the right to alter any prices/discounts at any time without prior notice.

6 Minimum Order

There is a minimum order of £750.00 + VAT. Any orders received below this value will be subject to a small order charge of £75.00 + VAT.

7 Delivery & Risk

Delivery lead-times are given in good faith and Showpiece Design Limited will not be responsible for any kind of delay in transit. We accept no liability and the buyer has no right to cancel the order if delivery is delayed beyond the estimated time unless we have specifically agreed in writing to deliver on a particular date.

Prior to dispatch great care is taken to inspect and package all goods. Upon receipt of a delivery, all goods must be examined for damage before signing the carrier’s note. In the event that goods are damaged, the carrier’s note should be endorsed accordingly, the goods should be kept in the original packaging at the buyer’s premises for later inspection and Showpiece Design Limited should be notified in writing

within 24hrs. Failure to comply with any of the above will be deemed that the goods are acceptable and the buyer unconditionally waives any right to reject the aforementioned goods.

Our liability in respect of loss or damage to goods shall not exceed the invoice value of the goods (excluding VAT) and our liability shall in no event extend to consequential or indirect loss or damage, loss to third parties or loss of business. The goods must be delivered to the delivery address agreed with Showpiece Design Limited.

Under no circumstances should the carrier be instructed by the buyer to deliver to another address or to leave the goods elsewhere. If the buyer, or a representative of the buyer is not available to check and take delivery of the goods at the delivery address, this may result in the carrier needing to return on another date and a delivery surcharge to the buyer may apply. Deliveries north of Newcastle upon Tyne may incur additional delivery charges.

8 Payments

Non-account buyers must submit payment with their order. When paying by cheque, please allow 5 working days for funds to clear before goods can be released.

Credit accounts may be applied for following a minimum of 3 months regular trading with Showpiece Design Limited on payment with order basis. Terms of trade are 30 days Nett and any account outstanding for more than 30 days may be charged interest at 5% above Barclays Bank PLC lending rate. We reserve the right to refuse or withdraw credit accounts at any time. All accounts are 30 days NETT, unless otherwise agreed by Showpiece Design Limited in writing. Showpiece Design Limited reserves the right to charge any legal costs on pursuant claims, regardless of location. Interest on overdue payments shall be charged at 5% above the current BOE rate. For outstanding payment arrears, Showpiece Design may pass on your details to a debt recovery company or seek legal action to resolve the matter or clear your account.

9 Returns

No goods may be returned to Showpiece Design Limited without our prior consent or after a period of 7 working days. Goods are returned at the buyer’s cost and risk. A restocking charge will be made at 20% of the invoice value of all goods returned. Custom made goods are not returnable.

9a Warranty Returns

All products, unless otherwise stated are covered with a minimum of 12 months warranty. Any failures during this period should be advised, in writing, to Showpiece Design Limited and the goods returned at your expense for evaluation or correction. Under no circumstances should the goods be discarded. Any attempts to repair the products prior to instruction from Showpiece Design Limited will invalidate the warranty. Showpiece Design Limited reserve the right to repair the products, unless commercially unfeasible.

In the event of minor repairs, Showpiece Design reserve the right to send replacement parts, to then be fitted by others.

10 Copyright

Copyright of any product manufactured by us or any design, illustration or drawing produced by us remains the sole property of Showpiece Design Limited unless expressly agreed in writing by Showpiece Design Limited.

11 Reservation of title

Risk in the Goods shall pass to you when the Goods are delivered and paid in full.

The property of the Goods shall remain with us until you pay all sums due whether in respect of this contract or otherwise. You shall hold the Goods as our fiduciary agent until title passes. Until title passes the Goods shall be stored separately from any other Goods and you shall not interfere with any identification mark, labels batch numbers or serial numbers on the Goods. Until title passes we agree that you may use as principle and not as our agents in the ordinary course of your business subject to the express condition that at our direction the entire proceeds of any sale or insurance proceeds received in respect of the Goods are held in trust for us and not mixed with any other monies or paid into an overdrawn bank account and shall at all times be identifiable as our money. We shall be entitled to recover the price of the Goods including VAT even though the property in any of the Goods remains with us. We shall be entitled at any time to recover any or all of the Goods in your possession to which we have title and for that purpose we our servants or agents may with such transport as is necessary enter upon any premises occupied by you or to which you have access and where the Goods may be or are believed to be situated.

Whilst every effort is made to produce colour accurate images, the actual product colours may vary.

Showpiece Design Ltd. reserve the right to change product designs/specifications without prior notice.



HEAD OFFICE

Tithe Barn,
Sulham Lane,
Pangbourne,
Berkshire,
RG8 8DT

Tel: 0118 984 3486

Email: sales@showpiecedesign.co.uk

Website: www.showpiecedesign.info

OUTDOOR

FURNITURE | AWNINGS | UMBRELLAS | PERGOLAS | ROOF SYSTEMS